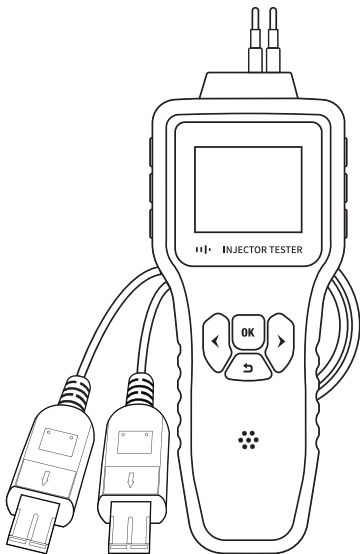


User Manual

Portable Automotive Injector Tester



Catalog

Precautions	01
1. Product Overview	02
1. 1 Panel Parsing	02
1. 2 Parameter Information	03
2. Product Features	04
2. 1 Working Mode	04
2. 2 Procedure	04
2. 2-1 Mode 1	05
2. 2-2 Mode 2	05
2. 2-3 Mode 3	06
2. 2-4 Mode 4	06
2. 2-5 Mode 5	07
2. 3 Washing Steps	08
2. 4 Short-circuit Protection	11
2. 5 Buzzer	11
3. Warranty and Service	12

! Safety Precautions

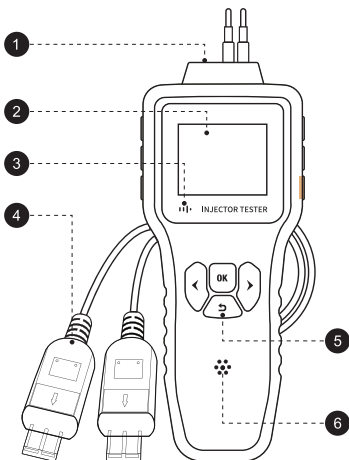
This manual includes instructions for using the device and how to operate, in order to prevent personal injury and damage to the vehicle or fuel injector detector, please read this user manual carefully first, and observe the following safety precautions when operating the vehicle:

- 1** Before using this injector tester, the engine of the car must be turned off.
- 2** Do not smoke or light a fire near a car.
- 3** Do not splash your car's fuel on hot engine parts.
- 4** Use this injector tester only in ventilated places, and do not inhale the exhaust gases from the car and the vapors generated by fuel volatilization.
- 5** Do not approach any rotating (or moving) parts of the car, and do not touch any heat-generating parts of the car.
- 6** Wear safety goggles that comply with ANSI standards.
- 7** Do not short-circuit the positive and negative poles of your car battery.
- 8** Always follow the warnings, admonitions, and maintenance instructions in the vehicle maintenance manual.
- 9** Do not touch any parts of the vehicle with dangerous voltages.
- 10** Once the test is complete, all disconnected vehicle connections should be properly restored.

1. Product Overview

This device can help you diagnose injector problems and test injectors on a case-by-case basis to help confirm stuck, leaking, or burn-out conditions. It has 5 pulse signal output modes, user can choose one according to needs. Device powered by a 12/2A DC power adapter, the continuous mode identifies the quality of the injector when the engine is off. The mode lock function ensures consistency when testing the injector. This device can be used with any testers.

1. 1 Panel Parsing



- ① **DC Adapter:** 12V/2A Power adapter.
- ② **Display Screen:** Displays the test mode/value.
- ③ **LED Indicator:** Displays the test status.
- ④ **Pulse Output Terminal:** Connect the positive and negative poles of the fuel injector.
- ⑤ **Physical Silicone Keys:** Four-button navigation for quick operation.
- ⑥ **Buzzer:** A chime is emitted according to the test.

1.2 Parameter Information

Project	Description
Display Screen	1.8 inch LCD Screen
Operating Temperature	0°C~40°C (32°F~104°F)
Storage Temperature	-20°C~50°C (-4°F~122°F)
Voltage Support Range	8V~18V
Current Support Range	0A~8A
Power Supply Mode	12V/2A DC Power Adapter

2. Product Features

2.1 Working Mode

1. Turn off the car's engine.
2. Remove the wire plug of the fuel injector from the car, then connect the two pulse output terminals of the device with the fuel injector of the car.
3. Connect the DC plug of the DC jack power adapter to the device and the other end to the power supply. Once you have completed the above steps, you can start the test.

2.2 Procedure

1. Select the injector 5V or 12V then voltage press the "OK" button to confirm (other information will not be displayed at this time).
2. Select the mode (1~5) and press the "OK" button to confirm (at this time, the mode number flashes, and the preset value is displayed but not flashing).
3. Press the "OK" button to confirm the preset value, press the "OK" button again to execute the command (all values in the preset mode flash at this time).
4. Press the "Return" button to return to the previous selection position, press and hold the "return" button to reset all settings.

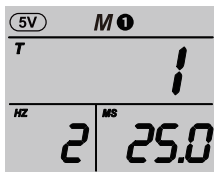
5. After the test process finished, press tset again, press the "return" button to exit.

Note: When mode 1 to mode 4 is selected, the corresponding pulse width, frequency, and number of counts will be displayed on the screen according to the set values, but in mode 5, follow the steps to set the count, frequency, and pulse value.

2. 2-1 Mode 1

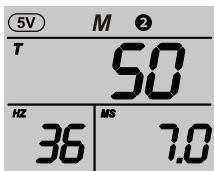
Note: The different modes are explained as follows: (two types of injectors with different voltage volts, low/high voltage refers to 5V/12V two voltages). Take 5V injector for sample.

Mode 1: Single pulse mode (low/high voltage output), in this mode, when the "OK" button is pressed, the device will emit a pulse with a pulse width of about 255ms.



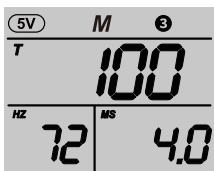
2. 2-2 Mode 2

Mode 2: Short Pulse Mode (Low/High Voltage Output), in this mode, when the "OK" button is pressed, the device will emit 50 pulses with a pulse width of about 7ms.



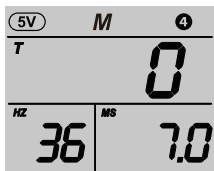
2. 2-3 Mode 3

Mode 3: Long Pulse Mode (Low/High Voltage Output), in this mode, when the "OK" button is pressed, the device will emit 100 pulses with a pulse width of about 3.5ms.



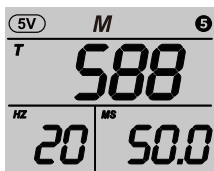
2. 2-4 Mode 4

Mode 4: Continuous Pulse Mode (Low / High Voltage Output), in this mode, when the "OK" button is pressed, the device will output continuously at a rate of 50 pulses per 1450ms, with a pulse width of about 7ms per pulse.



2. 2-5 Mode 5

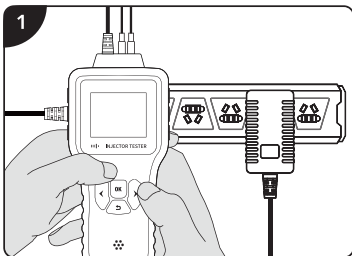
Mode 5: Custom Mode (low/high voltage output), in this mode, you can customize the frequency (1Hz~50Hz), pulse width (1ms~50ms), and number (1 time~9999 times) by the "Left/Right" button, and press the "OK" button to test.



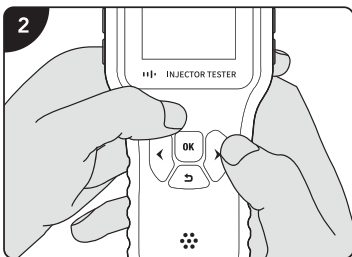
In any test modes, you can terminate the pulse output at any time by pressing the "OK" button again.

2. 3 Washing steps

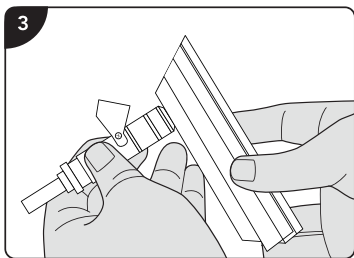
1. Connect the 12V/2A power adapter to the device.



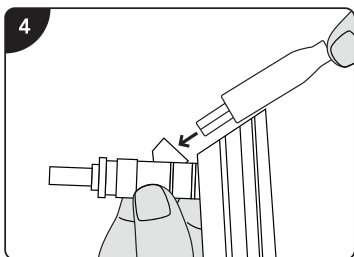
2. Start the device and then choose the test mode.



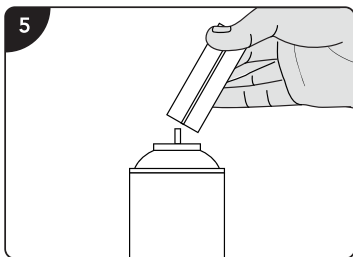
3. Insert the injector into the injector adapter.



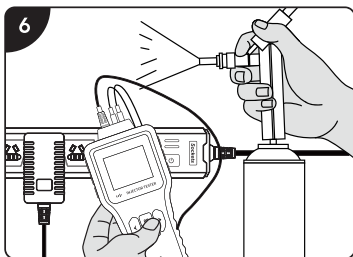
4. Insert the injector connector terminal to the injector.



5. Connect the injector adapter to the injector cleaner.



6. Select the test mode, press the test button, and observe the spray status and injection angle of the fuel injector.



Note: After the test process is completed, the injector to vehicle.

2. 4 Short Circuit Protection

When a short circuit occurs in the device, the screen will displays "SC" and stops executing all commands until the short circuit is lifted. After the screen is disarmed, the device will enter the initialization interface.



2. 5 Buzzer

During the test, the buzzer will beep continuously, and at the same time, accompanied by a red LED light indication, after the command is executed, the LED light will go off, and the buzzer will stop chirping.

3. Warranty and Service

Hello! Thank you for purchasing our products, in order to better serve you, please read carefully and fill in correctly and save this warranty card.

Name			
Telephone			
E-mail			
Purchase Date		Product Model	
Order Number			
Shipping Address			
Maintenance Record	Date	Failure Causes and Solutions	

※ **Warranty Statement:**

If the product with any quality issues needs to repair, please send this warranty card together with the purchased product back to our company for after-sales service.

Manufacturer

OBDResource Electronics Co., Ltd

Email: info@obdresource.com

Tel: +86-755-29071623

Web: www.obdresource.cn

Add: Xinniu Community, Longhua District,
Shenzhen, CN



GOAL REACH CONSULTING LTD

OFFICE 1029 3 HARDMAN STREET 10TH FLOOR,
SPINNINGFIELDS MANCHESTER, UK M3 3HF
goalservice@hotmail.com



SUCCESS COURIER SL

CALLE RIO TORMES NUM.1, PLANTA 1, DERECHA
OFICINA 3, Fuenlabrada, Madrid, 28947 Spain
successservice2@hotmail.com

EU001721038211949SOfo



**UK
CA**

Made in China

Version Number: A02